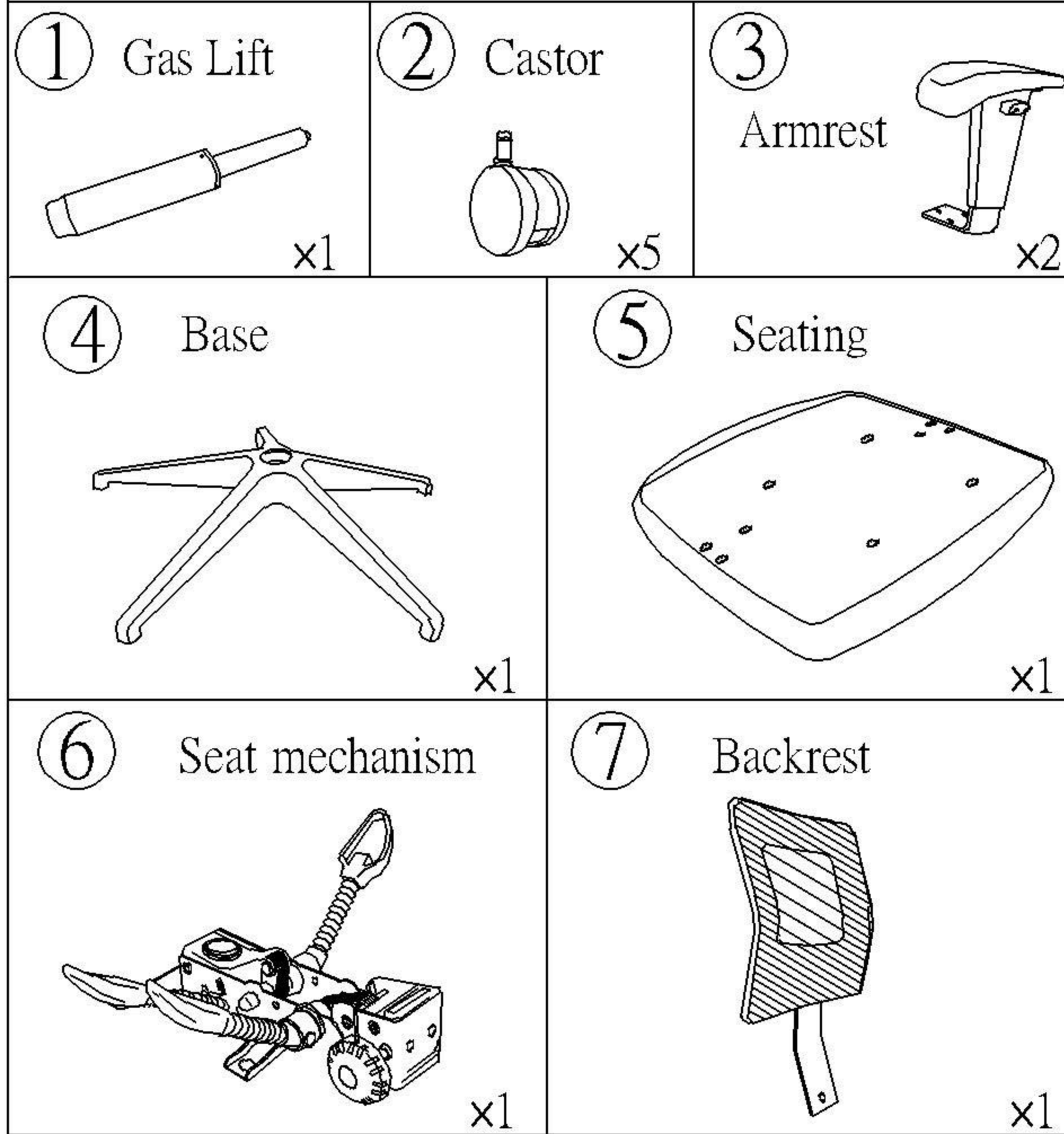


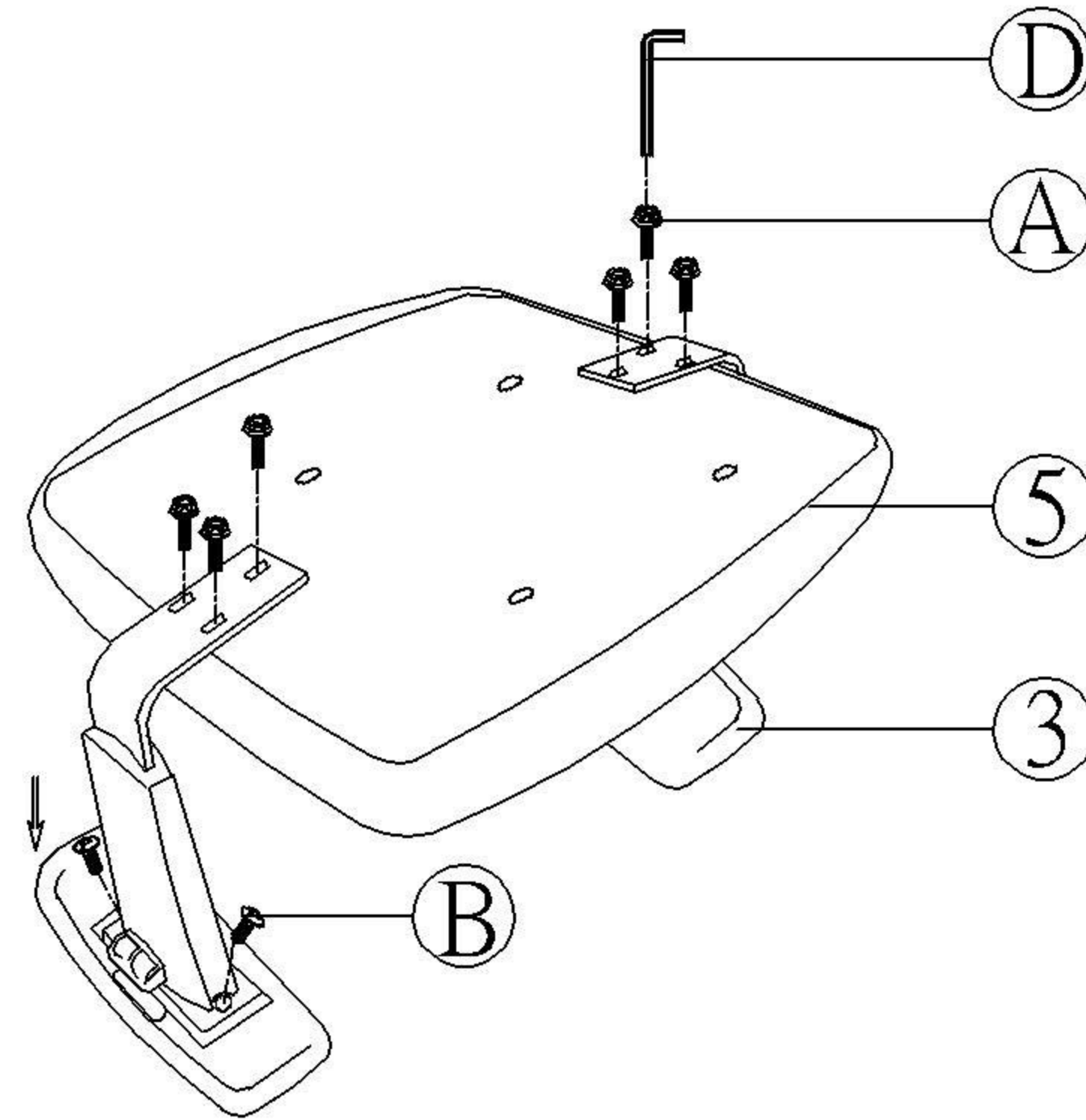
# (F Series )Assembly instructions

List of the chair parts  
(Note:Some parts are different from picture .  
Please make the object as the standard)



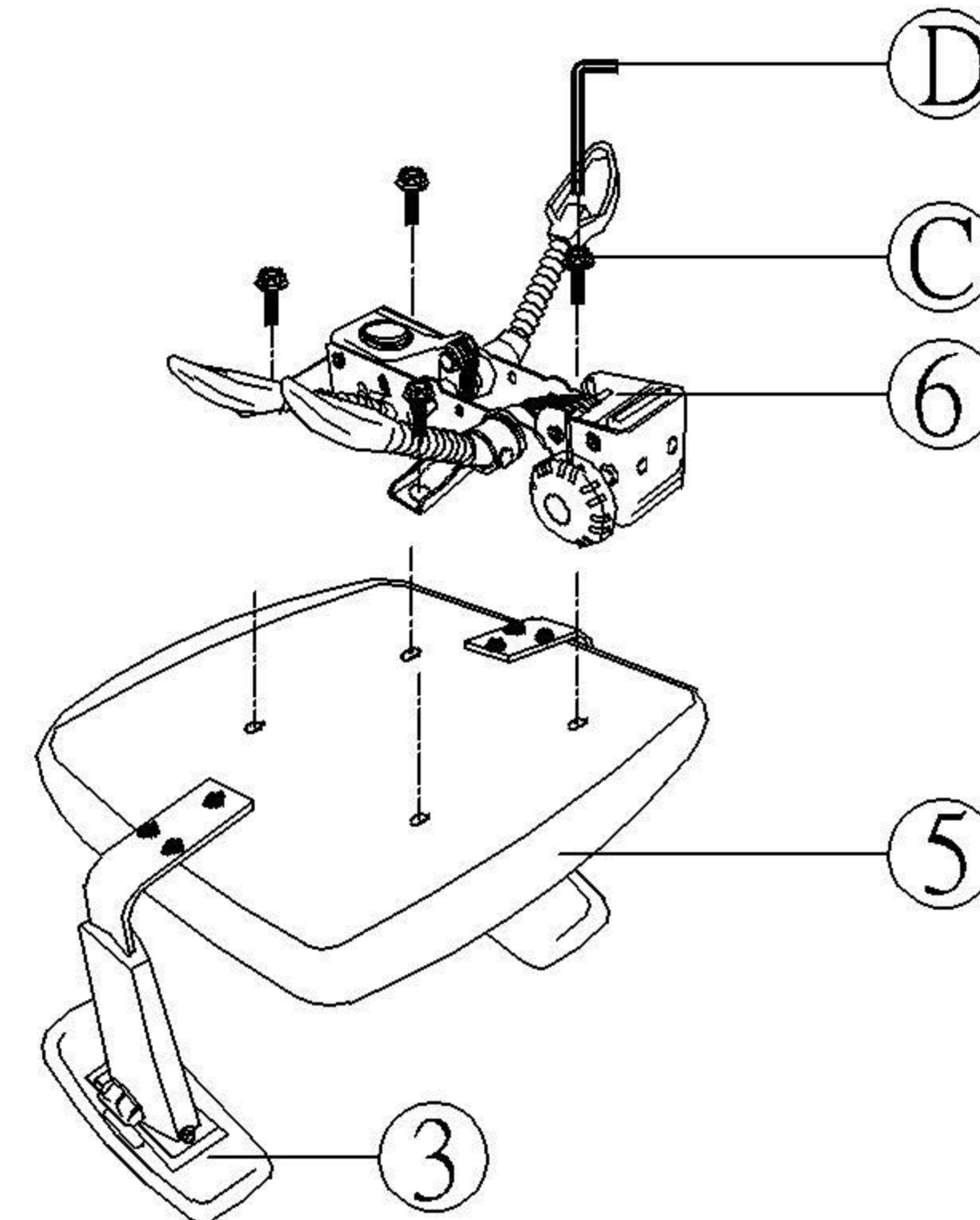
## STEP 1:

1. Insert armrest on the seating.
2. Tighten the screws A×6pcs and B×4pcs.



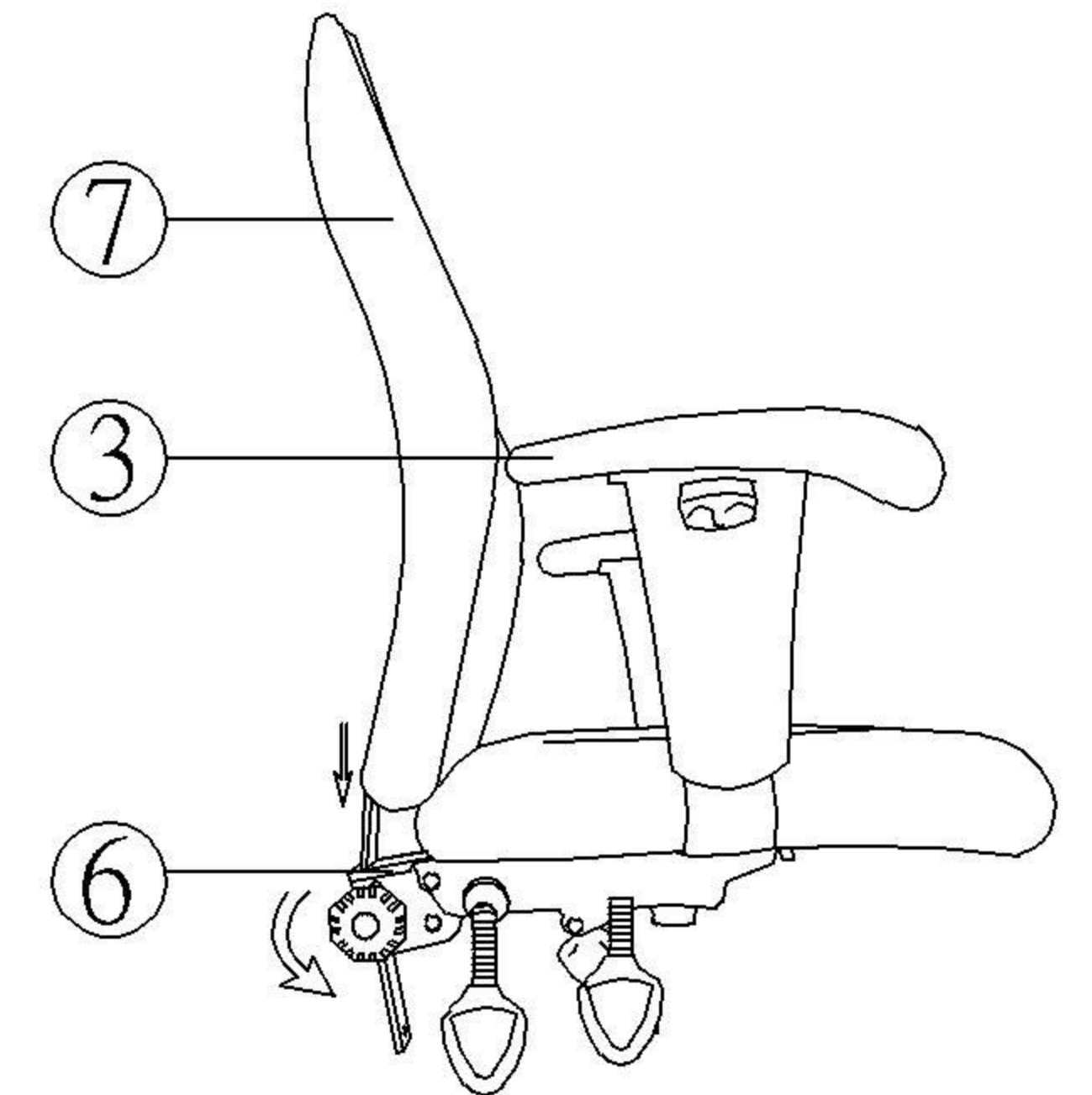
## STEP 2:

1. Insert seat mechanism on the seating.
2. Tighten the screws C×4pcs.



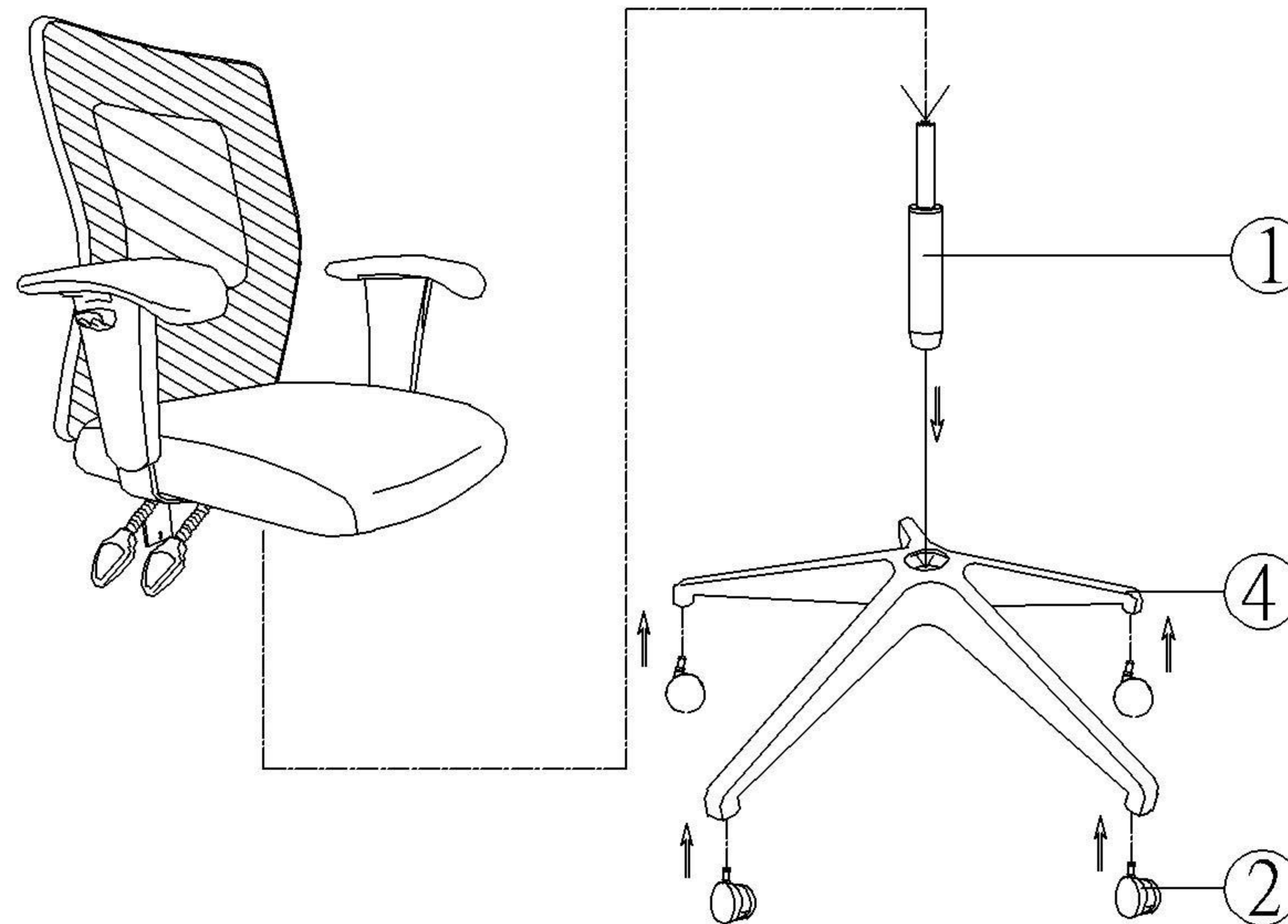
## STEP 3:

1. Insert backrest into the seat mechanism.
2. Adjust the backrest to the proper height and tighten the stabilizer on the back steel.



## STEP 4:

1. Insert five castors into the base and the gas lift also.
2. Insert the chair body with the base part together.



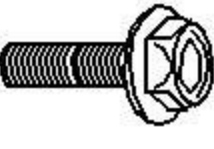

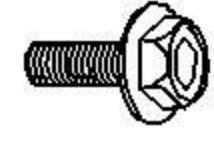

## User Guide

### Maintenance and Attention:

1. Make sure that the chair can only carry one person at a time.
2. Do not use the chair as a step stool or ladder.
3. Do not use the chair before all parts are properly assembled.
4. Do not use the chair unless all screws have been tightened.
5. If destroyed by outside forces or defect word, stop use the chair until repaired.
6. For your safety, the instructions listed above must be strictly observed.



## ⑧ Spare parts

No	Figure	Screw	Qty
A		M6*30mm	6PCS
B		M6*20mm	4PCS
C		M6*25mm	4PCS
D		M6	1PCS
Model no		AM100	